



SILVER JUBILEE

[EVENTS](#) | [ARCHIVES](#)

Mainstreaming the Alternative Public Health Paradigm

The SOCHARA has been deeply involved with the evolution of a community oriented, India relevant, public health paradigm in the country. Here we outline ten steps since 1998 in which we were proactively engaged and key contributors as well. A larger reference paper for a peer review journal is being prepared). This compilation is just part of the silver jubilee reflection. | [Read>>](#)

Kolar Comprehensive Primary Health Care Initiative

The Kolar Comprehensive Primary Health Care (KCPHC) Initiative is a current project implemented by SOCHARA to strengthen the role of two Primary Health Centers (PHC), one in Srinivasapura Taluka and another in Mulbagal Taluka in Kolar district of Karnataka state. | [Read>>](#)



My Visit to SAHARIA's Madhya Pradesh

My first visit was to a slum on the outskirts of Gwalior, Noorganj, where 30 children, all of whom are rag pickers, are undergoing non-formal education in a centre run by CID so that they then can be placed in mainstream education. I was able to interact with them and they were quite free to talk though I struggled with my Hindi. | [Read>>](#)

Community Health Fellows' Day – Celebrations

On February 15th, 2016, for the first time in CHLP history, Fellows' Day was celebrated and it was organized entirely by the fellows. They sang songs in Kannada, Malayalam, Telugu, Oriya and Hindi; danced to various songs from across the nation, performed a Romanian dance and even humorously imitated team members and their learning facilitation styles. | [Read>>](#)

OUT OF BOX

The KEYSTONE open access teaching and learning materials (38 videos and 43 slide presentations across 13 modules) are now live online, published under a Creative Commons license. | [Read>>](#)



1. [Mainstreaming the Alternative Public Health Paradigm](#)
2. [Kolar Comprehensive Primary Health Care Initiative](#)
3. [My Visit to SAHARIA's Madhya Pradesh](#)
4. [Community Health Fellows' Day Celebrations @ SOPHEA, SOCHARA](#)
5. [MFC Annual meet](#)
6. [Visit to SHRC, Raipur and Interactions with Mitanins](#)
7. [Journey of the SOCHARA Website: Future of Hope!](#)
8. [KALAHANDI - a experience sharing by Fellow](#)

E-S  **CHARA**

News and updates on Community Health

Note from SOCHARA, Bengaluru!

Every milestone in one's life or in an organisation is an occasion for reflection, as well as for celebration. As SOCHARA reaches its silver jubilee on 16th April 2016 one of our senior members Prof DK Srinivasa captured the mood of the moment at a CHLP Dissemination Meeting last December saying "let's celebrate!" We agree! Celebration is an important part of the social vaccine for good health. However there is also a process of internal reflection and transition among the team and Society members over the past year. The future beckons, as there is a large unfinished agenda ahead. | [Read>>](#)

EVENTS

15 & 16
April

SOCHARA SILVER JUBILEE – Southern Region @ Bengaluru

27 & 28
April

SOCHARA SILVER JUBILEE – Northern Region @ Bhopal

5
May

MNI State level Steering Committee Meeting @ Salem



Medico Friends Circle - Annual meet

Staff members and fellows of 12th batch of Community Health Learning Programme attended the 42nd Annual Meet of **Medico Friends Circle (MFC)** meet on “Inequity in Health and Health Care in Urban Areas” at Raipur between 19th and 21st February 2016. | [Read>>](#)

Visit to SHRC, Raipur and Interactions with Mitanins

The team from SHRC consisting of Ms.Ashu, Ms.Priyanka and Ms.Rizu took us through the evolution of the Urban *Mitanin* programme which is currently in 19 cities with more than 3000 *Mitanins*. They then explained about the differences between Accredited Social Health Activist (ASHA) and *Mitanins*, and the functions of the latter including their work with *Anganwadi* Centres (AWC), public distribution centre, mid-day meal scheme, urban health nutrition day, tuberculosis and leprosy detection. | [Read>>](#)

Journey of the SOCHARA Website: Future of Hope!

SOCHARA is very happy to cross the

OUT OF BOX

22 March 2016 | COPASAH

An online workshop of practitioners in South Asia highlighted key challenges and learnings on community-led initiatives to hold service providers accountable for the delivery of health and nutrition services. | [Read Doc 1 & Doc 2 >>](#)



first year milestone of the new website, with release of the First Anniversary issue of the E-SOCHARA Newsletter, 7th Issue (Vol 2 (2), March 2016). The first issue of the e-newsletter was launched in March 2015, shortly after the new website was created.

It has been a wonderful experience and an eventful journey since 2014 of revamping the SOCHARA website through introducing new features and services. The initiative to restructure the website started in August 2014 with encouraging support, coordination and contribution from SOCHARA Team Members. | [Read>>](#)

KALAHANDI - a experience sharing by Fellow

If you or I were to live neglected and forgotten lives in the darkness of the drought hit Kalahandi region in Orissa, in the rubble of a public health system, with little food, barely clothed, alien to the concept of electricity and ventilation in a world where open defecation is the norm, where the most enjoyable luxury is the one rare clean source of drinking water and are deprived of the right to read or write because poor/absent public educational facilities and the money allocated to

CONNECT @ SOCHARA

[Community Action for Health - A community led process in Tamilnadu towards strengthening public health system under NRHM.](#)

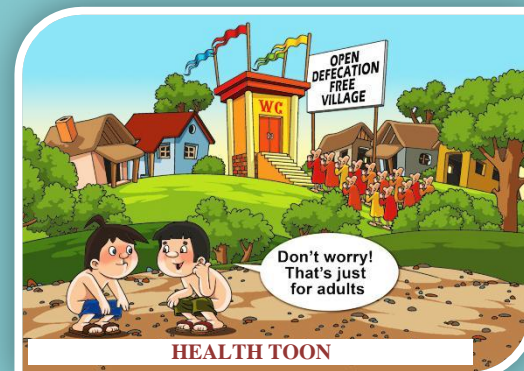
[SOCHARA silver jubilee archives: shadow of community health footpaths for future.](#)

[Glimpse of Herbal Garden Training @ FRLHT Bengaluru](#)

[Kolar Comprehensive Primary Health Care Initiative.](#)

[Snaps of Thayloor PHC visit](#)
[Addgal PHC Visit](#)
[Kalajatha Workshop](#)

your survival and development is dwindling or pilfered while the good-willed people outside your world are fooled into believing you are being helped, wouldn't you be satisfied with the prospect of dying to malaria while sipping on a bottle of *mahua* (liquor made from *mahua* flower) because you have nothing to lose? | [Read>>](#)



BACK ISSUES



**Society for Community Health Awareness
 Research And Action (SOCHARA)**

No. 359, 1st Main, 1st Block, Koramangala, Bengaluru-560 034, Karnataka, India
 Phone : +91-80-25531518 |
 Email :info@sochara.org | www.sochara.org

UNSUBSCRIBE

If you want to unsubscribe this E-SOCHARA newsletter, please send a blank mail to:socharacommunications@gmail.com with the subject "unsubscribe"